

PROJECT MAP

FINS/Babine Forest Products
Fish and Fish Habitat Inventory

Pierre/Twain
Mapsheet 093K051

Map 4 of 4

SCALE 1 : 20,000

KILOMETRES

Projection: ALBERS EQUAL AREA

PRINTED: May 03, 2001

AML - y:\active\fins\aml\fins-fhproj99(suppl).aml
Supplement AML - y:\active\fins\aml\fins-fhproj99(suppl).aml

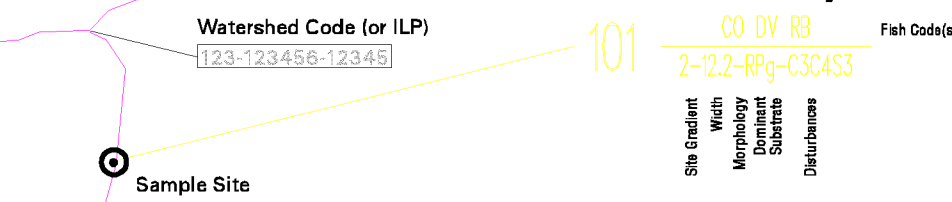
PREPARED BY:

FINS
FISH INVENTORY SPECIALISTS

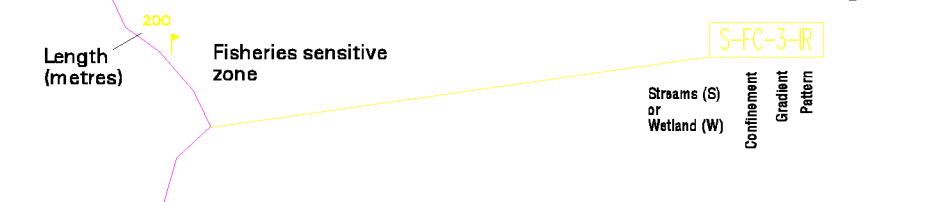
AMD
Digital Imaging

Stream Information Summary

Site Data Symbol



Reach Data Symbol



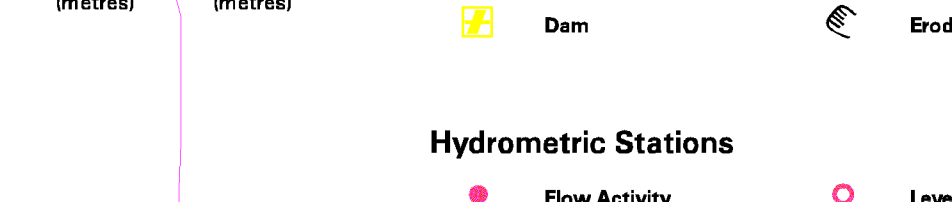
Enhancement / Management Activities



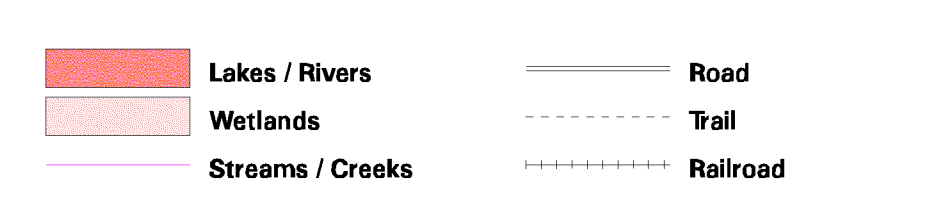
Obstructions



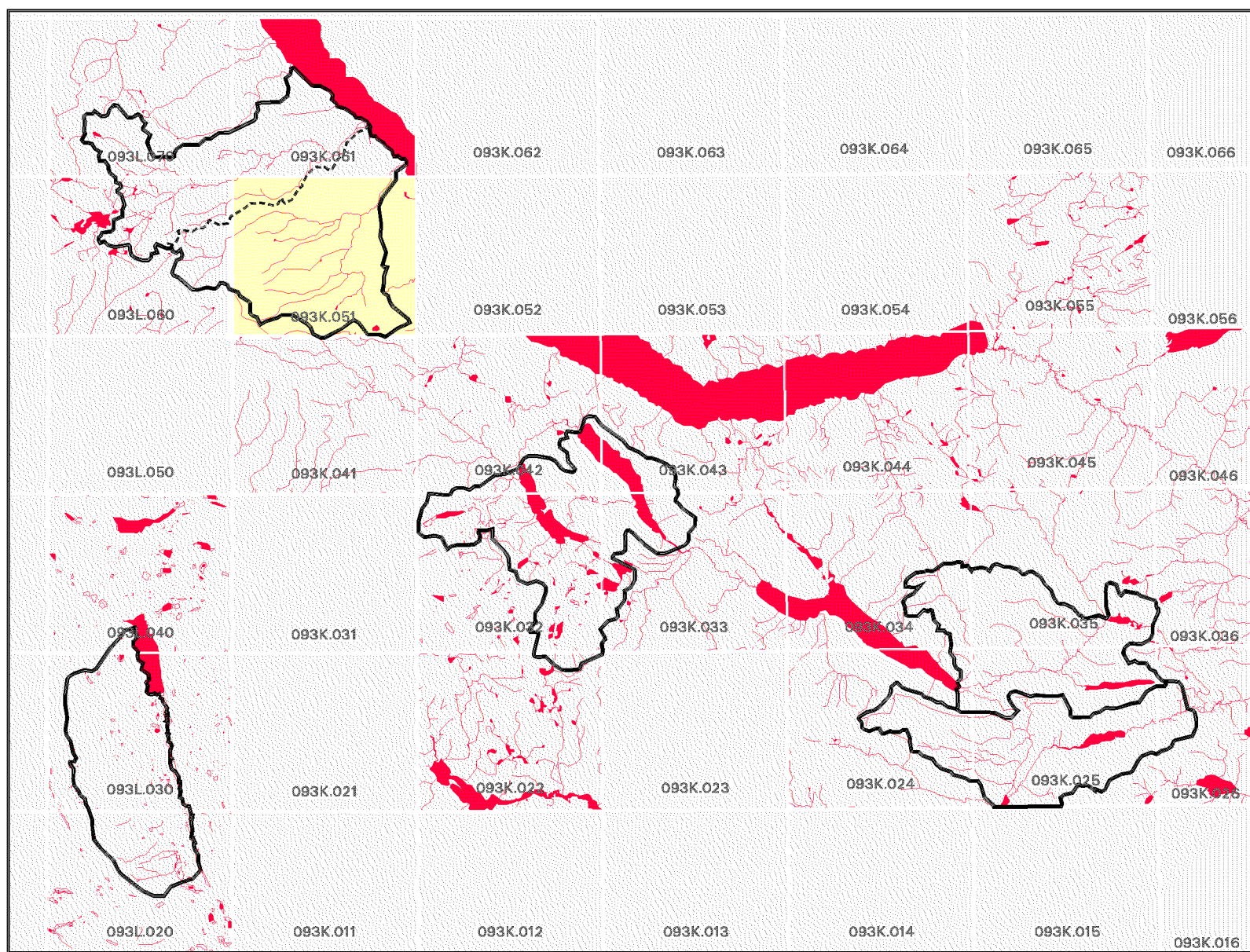
Hydrometric Stations



TRIM Features



Project Area(s)

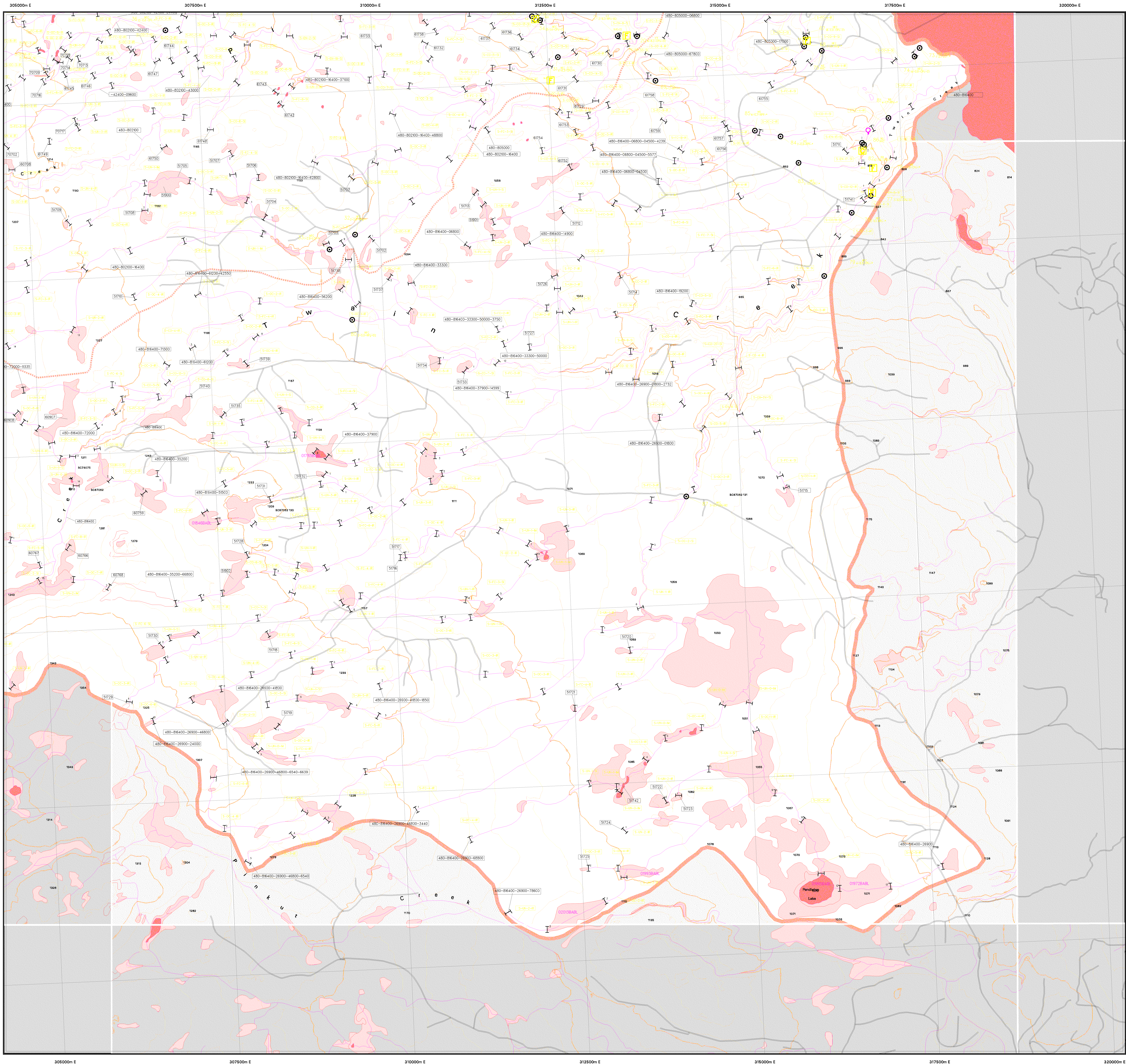


Source Information

BASE: TR
LOC: FDG
HAB: INV
FISH: INV
DATE INV: July/10 - September 29, 1999
STR SYM: INV
LK SYM: INV
INV MGMT: MELP

MAPPING STANDARDS: B.C. Ministry of Fisheries - "Standards for Fish and Fish Habitat Maps"
VERSION: 2.0
DATE: May 1998 (Errata #2 May 2000)

MAP ACCURACY IS PLUS OR MINUS 20 METRES



Fish Species Codes

DV/ST Dolly Varden/Bull Trout
CT Cutthroat Trout
RB Rainbow Trout
TSB Threespine Stickleback
CAL Coastrange Sculpin
PK Pink Salmon
SP Spike
CCG Slimy Sculpin
WF White Fish General

Stream Confinement Codes

WCT Westslope Cutthroat Trout
SU General Sucker
NS Not Sampled
NCD Non Classified Drainage
NVC No Visible Channel
NFC No Fish Caught
CO Coho Salmon
CC General Sculpin

Stream Pattern Codes

EN Entrenched
CO Confined
FC Frequently Confined
OC Occasionally Confined
UN Unconfined
N/A Not Applicable

Stream Morphology Codes

ST Straight
SI Sinuous
IR Irregular, wandering
IM Irregular, meandering
ME Regular meander
TM Tortuous meanders

Substrate Codes

F Fines <2mm
G Gravels 2-64mm
C Cobbles 64-256mm
B Boulders >256mm
R Rock >4000mm

Disturbance Indicator Codes

01 Beaver Dams
02 Abandoned Channels
03 Eroding Banks
04 Avulsions
05 Extensive Riffles or Cascades
06 Minimal Pool Area
07 Elevated Mid-channel Bar
08 Multiple Channels or Bars
09 Disturbed Stone Lines

This product has been accepted as being in accordance with approved standards within the limits of Ministry quality assurance procedures. Users are cautioned that interpreted information on this product developed for the purposes of the Forest Practices Code Act and Regulations, for example stream classifications, is subject to review by a statutory decision maker for the purpose of determining whether or not to approve an operational plan.